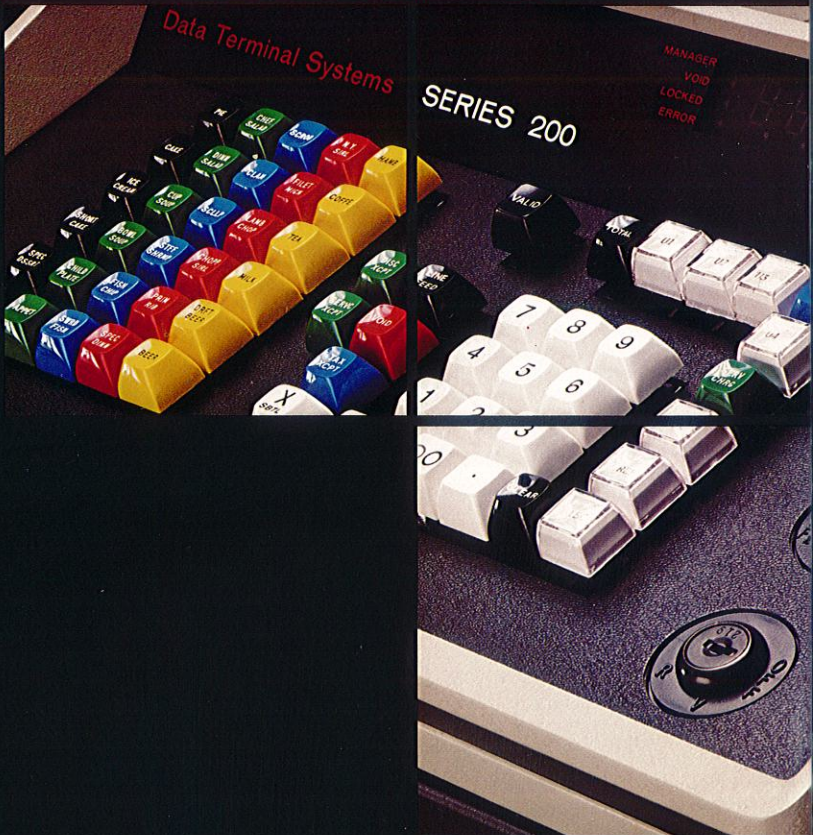
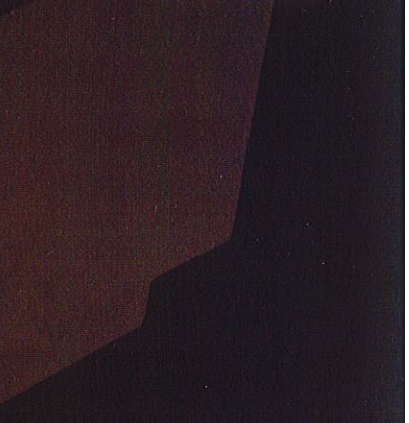
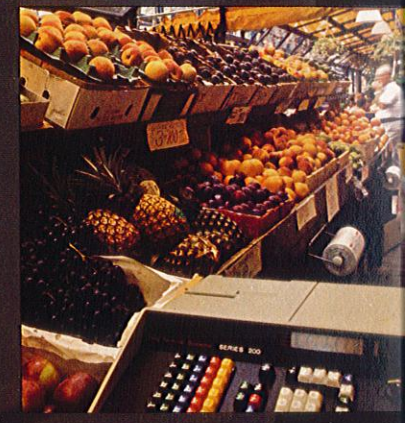
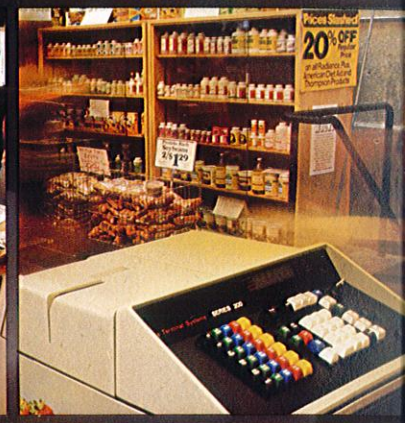
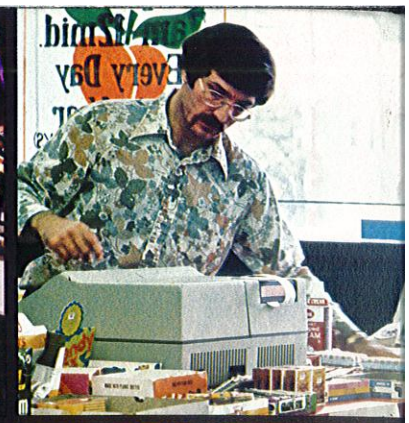
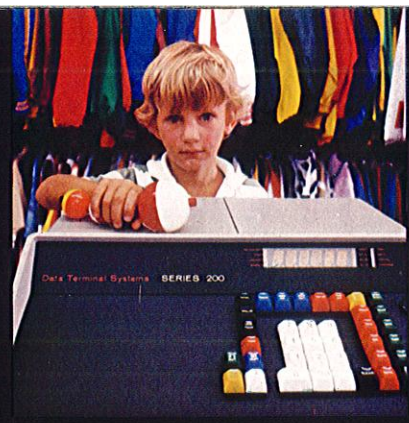


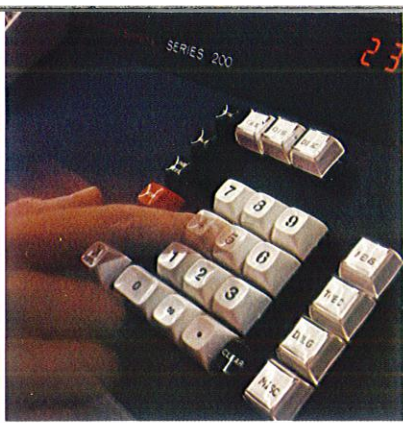
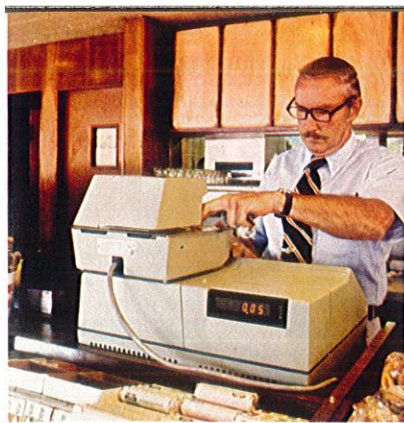
The dawn of  
a new family of  
cost effective retail  
business control  
systems.



Data  
Terminal Systems  
Series 200

There's a revolution going on at the retail point-of-sale. The cumbersome mechanical cash registers of yesteryear are being replaced with a better, modern technology – the powerful free-standing retail control terminal. These programmable modular designs contain full stand-alone intelligence to deliver the benefits of computer-driven systems – without high levels of cost and complexity. And their reliable solid-state electronics can be tailored and expanded easily to meet the changing future requirements of progressive store management.





The family of 200 Models from Data Terminal Systems are a perfect expression of that revolution. They bring a new level of efficiency to today's store environment – and they're field-upgradable for the advanced data collection and communication needs of tomorrow.

The basis of the 200 Series is an advanced microprocessor-driven design never before available in this price range. It's housed in a new cabinet that has an integral cash drawer for lower profile and better customer contact. Another major first is the 200's matrix printer. It runs bi-directionally for fast performance, and produces full 4 character alpha-numeric information for each entry. Alphabetic

store logo, department/function/payment description, and automatic in-cabinet validation are all programmable. With two station printing both you and your customers now benefit from richly detailed receipt and journal tapes. You can even record memo numbers for any SKU, prescription or other control needs desired.

Our Model 210 is the first in the 200 Series. It includes a 26 position keyboard that's fast, flexible, and fully buffered. With up to 8 programmable totals, the 210's programmable microelectronics supply a mix-or-match choice of up to 8 tendering keys, 7 open departments, 7 subtracting departments, or 7 preset departments with automatic price entry. Coin dispensing, two-cashier operation, and a variety of operator compulsions are also available. Plus, the 210 delivers the many features

you've come to expect from Data Terminal Systems, including:

- > 3 day-end reports
- > 3 month memory protection
- > 3 selective itemizers for tax, multiple tax, discounts, etc.
- > Void/error correct
- > Auto change, multiplication and split pricing, for fast, accurate operation

The DTS 220 Models add memory and peripherals expansion to the Model 210, with your choice of 12, 18, or 40 programmable totals. There's an optional remote slip printer for charge slips, customer tabs, and account recording. High entry limits by department to control over-rings. Plus a previous balance function and an optional 39 preset keyboard are ideal for food service applications.

The 200 family doesn't end there, either. In the future there will be full in-store consolidation – and long distance reporting to a host computer with our

ANS-R-TRAN™ option. Plus, electronic scales, food stamp itemization, memory expansion, training mode and much more. The 200 Series is ideal for virtually all major retail market segments – at prices that will amaze you.

The Series 200 is the latest development from Data Terminal Systems, the specialists in free-standing retail control systems. With a proven background in microelectronic market requirements, DTS has created cost effective solutions for fully 75 percent of all retail segments.

Our stand-alones are sold, serviced, and supported by over 2000 representatives worldwide, and come with a full warranty.

The Series 200 assures you of complete store control with the most powerful reporting ever available in a low-cost ECR system. A

flexible, day-end summary contains control totals, media activity, department sales, and item movement via preset price categories.

The Series 200 can also deliver two separate Cashier A and B reports to aid management in cash balancing and employee

tracking. And, thanks to the 200's alpha-numeric printer, the reports are clear, concise, and highly descriptive.

DATA TERMINAL SYSTEMS 200 SERIES	220/40 Control/ Department Report	DATA TERMINAL SYSTEMS 200 SERIES	Control/Department Report 220/18	DTS THE SERIES 200	210 Control/ Department Report
4X 0004 01	<ul style="list-style-type: none"> <li>Report Number</li> <li>Mode (Read or Reset)</li> <li>Reset Counter</li> <li>Register Number</li> <li>Gross Grand Total</li> <li>Adjusted Grand Total</li> <li>Tax Collected</li> <li>Taxable Sales</li> <li>Service Charge Collected</li> <li>Service Chargeable Total</li> <li>Discount Given</li> <li>Discountable Total</li> <li>Unit Count</li> <li>Open Department Name</li> <li>Net Total</li> </ul>	4X 0005 05	<ul style="list-style-type: none"> <li>Report Number</li> <li>Mode (Read or Reset)</li> <li>Reset Counter</li> <li>Register Number</li> <li>Gross Grand Total</li> <li>Adjusted Grand Total</li> <li>Tax Collected</li> <li>Taxable Sales</li> <li>Discount 1 (Amount Discounted)</li> <li>Discount 1 (Discountable Sales)</li> <li>Discount 2</li> <li>Unit Count</li> <li>Open Department Name</li> <li>Net Total</li> <li>Preset Quantity Sold @ Preset Price</li> <li>Preset Name</li> <li>Net Total</li> <li>Sequence Number</li> <li>Register Number</li> <li>Insignificant Number</li> <li>Date</li> </ul>	4X 0009 02	<ul style="list-style-type: none"> <li>Report Number</li> <li>Mode (Read or Reset)</li> <li>Reset Counter</li> <li>Register Number</li> <li>Gross Grand Total</li> <li>Adjusted Grand Total</li> <li>Tax Collected</li> <li>Taxable Sales</li> <li>Discount Given</li> <li>Discountable Sales</li> <li>Unit Count</li> <li>Open Department Name</li> <li>Net Total</li> <li>Preset Quantity Sold</li> <li>Preset Price</li> <li>Preset Name</li> <li>Net Total</li> <li>Sequence Number</li> <li>Register Number</li> <li>Insignificant Number</li> <li>Date</li> </ul>
GGT 0000000336 10		GGT 0000041721 22		GGT 0000000337 62	
HTGT 0000000333 74		GGT 0000155754 91		GGT 0000000358 50	
TAX 1 03		TAX 2 30		TAX TL 8 03	
TAX TL 164 45		TAX TL 50 11		TAX TL 160 40	
SUCH 0 69		DS 1 1 45		DISC 0 05	
SUCH TL 13 75		DS 1 TL 17 92		DISC TL 1 00	
DISC 1 18		DS 2 6 27		DISC MISC 96 11	
DISC TL 11 75		DS 3 TL 5 47			
0003 MISC 4 50		0011 MISC 41 59		0031 DRUG 106 79	
0002 WINE 5 00		0009 DRUG 24 36		0029 TOBC 69 01	
0002 LIQR 5 50		0006 TOBC 8 50		010100 30	
000500 25		001000 45		NEWS 30 30	
BTBR 1 35		NEWS 4 50			
000500 50					
DRFT 2 50					
000200 35					
HTLY 24700 70					
000200 25					
TEA 0 50					
000200 35					
COFF 0 70					
000100 45					
SODA 0 45					
000100 25					
SPEC 2 25					
000500 25					
PRIB 11 25					
000200 50					
OSTR 5 00					
000200 75					
RIBI 5 50					
000200 00					
FMIN 6 00					
000100 25					
NYSE 2 25					
000100 00					
SNFO 4 00					
0005 01 2 09-19-78					
* Up To 39 Open Or Preset Departments					
		DATA TERMINAL SYSTEMS 200 SERIES	Customer Receipt	DATA TERMINAL SYSTEMS 200 SERIES	Cashier A Report
		MISC 1 20 E		1501 0010 10 00	
		DRFT 0 50 E			
		OSTR 2 50 E		0000 TOTL 197 32	
		SNGL 1 25 E		*0001 SUCH 0 69	
		305/1 00		0009 CASH 142 10	
		MISC 0 60 E		0001 CHEK 2 00	
		LIQR 1 00 E		0001 AMEX 39 21	
		30 50		0001 MAST 23 01	
		DRFT 1 50 E		0001 PGGF 13 75	
		10 0000 55		0001 DISC 1 18	
		DISC 6 60-		0007 01 2 09-19-78	
		TAX 6 40			
		TOTL 6 05			
		CASH 9 00			
		CHRG 0 91			
		0051 01 1 09-19-78			

<b>200 Series / Specifications</b>				
<b>Model:</b>	<b>210</b>	<b>220-12</b>	<b>220-18</b>	<b>220-40</b>
Programmable totals	8	12	18	40
Dept./media/function/ preset keys	7	11	17	39
Itemizer exception keys	1	1	3	3
Manager keylocks	Read; Reset; Program	Read; Reset; Program; Void and Refunds	Read; Reset; Program; Void and Refunds	Read; Reset; Program; Void and Refunds
Cashier keylocks	Cashier A and B	Cashier A and B	Cashier A and B	Cashier A and B
Charge posting	—	Yes	Yes	Yes
Display	6 digit solid state, 12 supplemental messages			
Cash drawer	Integral within cabinet, full sized till			
Memory protection	One year CMOS memory, battery condition indicator			
Printer	2 station 4 character alpha-numeric matrix w/validation			
Options	Coin-dispensing via plug-in interface Remote 4 alpha slip printer & interface (Not available on 210) Second, separable cash drawer for 2 cashiers Auxiliary rear or remote customer display Optional battery operation Locking till covers and printer doors			

The Series 200 family represents a new horizon in stand-alone store management and cash control. It has established a new standard of computing power, cost effectiveness, and decision making right at the point of sale. For the price of a low cost electronic cash register, a whole new universe of benefits are now available — advantages unheard of from a terminal this economical until the development of the Series 200.

And, standing behind the 200 family is a company with the reputation and expertise to match. Data Terminal Systems has blazed a trail as the fastest growing and most technically advanced manufacturer in the retail business

control industry. Because DTS specializes in powerful, self-contained systems, we offer a commitment, an understanding, and a level of support unequalled in the field. By responding to retailer's needs with advanced microprocessor technology, DTS has become a leading supplier to fully 75 percent of all retail market segments with a network of over 2000 factory-trained sales, service and support representatives worldwide.

Our philosophy has been to design cost-effective yet powerful stand-alone ECR and POS systems that do not require a separate computer. With the Series 200 this approach has come to full fruition with the most

capable, flexible and upgradable terminal ever offered in the under \$2000 price range. The Series 200 represents the ultimate in affordable retail business control. It's the latest word in cost-effective store management, and the first symbol of what tomorrow's technology can do for progressive retailers today.

Data Terminal Systems is headquartered in Maynard, Mass. with research and development facilities in Stow, Mass.; additional manufacturing in Vega Baja and Morovits, Puerto Rico; and a European manufacturing facility in Clondalkin, Republic of Ireland.

# DTS Model 210



Data Terminal Systems SERIES 200

MEMBER VCR LOCKED SNAPCR  
210 COST ITEM  
SI A SBTL  
SI B TOTAL  
SI D CHANGE

NADIA'S THEME  
(The Young And The Restless)  
By [unclear]

SPALDING Official

POLAROID SX-70 LAND FILM  
TWO PACK SAVES YOU MONEY!

our baby

SOAVE

Put

cookies

McDonald's

Kodachrome 25

Johnson's

SUCRETS

Kodachrome 25

REGULAR SUCRETS

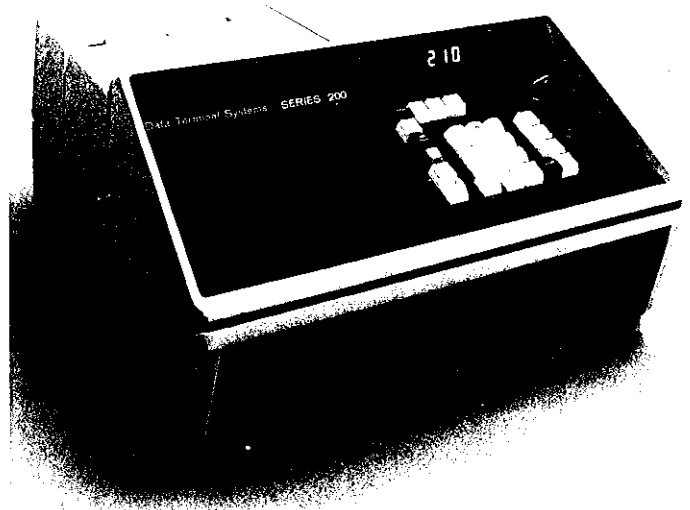
Kodachrome 25

# The DTS Model 210

DATA TERMINAL SYSTEMS PRESENTS THE MODEL 210	
4X 0013 06	
GGT 0000267423.07	
NGT 0000266906.39	
TAX 607.13	
TAX TL 12140.82	
TAX2 781.87	
TAX2 TL 7818.58	
0122 MISC 4578.75	
0033 DRUG 5667.98	
0151 @ 0.55	
TOBC 83.05	
0109 NEWS 20.40	

1X12 008V 103.57	
013 TOTL 6462.20	
0045 CA A 5792.77	
0004 CHCK 30.79	
0002 CHRG 593.94	
0007 PAID 44.70	
2X09 003V 22.43	
001 TOTL 7407.48	
0012 CA B 6346.46	
0009 CHCK 274.88	
0009 CHRG 220.44	
0006 PAID 565.70	
0395 06 2 12/02/77	

DATA TERMINAL SYSTEMS PRESENTS THE MODEL 210	
MISC 2.63 A	
14725#	
DRUG 5.26 C	
6@.55	
TOBC 3.30 A	
NEWS 0.15	
SBTL 11.34	
TAX 0.56	
TAX2 0.53	
TOTL 12.43	
CHCK 10.00	
TOTL 2.43	
CA A 5.00	
CHGE 2.57	
0386 06 1 12/02/77	



## Report

The electronic revolution means low-cost power in the hands of those who need it most; a small and specialized cash terminal designed for retail requirements, solving individual problems without breaking tight budgets.

And for small to medium sized stores, that's the Model 210. First in the 200 Series of electronic cash registers from Data Terminal Systems, the 210 establishes a new level of performance—one that will be the standard of excellence in the under \$1300 price range for years to come.

From its stylish low silhouette to bi-directional matrix printer, the 210 is the symbol of microcomputer ECR power in compact, economical, and easy-to-use packages. This is the kind of technology that Data Terminal Systems excels in, flexing and responding to individual retail control needs with the most advanced microprocessor designs commercially available today. And what it means is these outstanding—and standard—features on the Model 210:

- a dot matrix printer that operates in both directions for fast operation—a first in this price range.

## Receipt

- fully alpha-numeric receipt generation with 4 characters programmable per entry, plus a 3 line 16 character store message of your choice.
- upgradable, expandable design provides for future expanded memory, inter-register communication, and connection to electronic scales—for the first time in a low-cost ECR.
- a 26 position keyboard with "cash" key plus any combination of up to 7 preset, open, or subtracting departments—or media keys.
- slip insertion into printer for single line check franking, form validating, or coupon cancelling, with special "validate" key.
- 12 control totals, 8 programmable totals, and 10 counters—all of which report to management at day's end. Plus tracking information for two cashiers!
- the many automatic operator features you've come to expect from DTS including:
  - change calculation
  - full mixed decimal multiplication
  - split package pricing
  - tax computation, up to 3 tables or rates (one exception key)
  - 3 selective itemizers (programmable by departments) for taxes, automatic discount, VAT or service charge
  - full keyboard buffering
  - void/error correct
  - department high entry limits
  - department repeat

- plus, a host of other standard features:
  - programmable receipt suppression
  - selective journal print—also programmable.
  - X-read and Z-reset manager modes
  - half pence or "00" key
  - integral cash drawer
  - one year memory protect
  - subtotal compulsion (programmable)
  - simultaneous operation for two cashiers
- Model 210 options for even more low-cost performance:
  - coin dispenser interface
  - cash drawer compulsion
  - second B key lock
  - auxiliary customer display
  - second cash drawer
  - locking till cover

Never before has this kind of advanced ECR performance been so available and affordable for retailers of all kinds. With the Model 210, Data Terminal Systems brings you the ECR of tomorrow with only one exception—you can have it today. The 210 is sold and serviced by a worldwide network of more than 2000 Data Terminal Systems representatives, and comes with a full warranty on all parts and labor.

**Data Terminal Systems**  
124 Acton Street, Maynard, Massachusetts 01754 617: 897-3221

This keyboard illustrates one of the many different retail applications.

